

**GLUTANEX**



**AHA·BHA·LHA**

Acne Care Ampoule





High concentrations of  
Growth Factors, and Peptides

**Recommended use**  
For Clinic & Home Use



- Skin immunity and anti-microbial effect
- Keeps skin healthy without irritation
- Wound healing and cell proliferation effect

- Acne care ✓
- Strengthens skin barrier ✓
- Anti-oxidation ✓
- Strengthens skin immunity ✓
- Improves discolorization ✓
- Cell regeneration ✓



**Key Ingredients**



**Growth Factors**  
Naturally Repairs  
Damaged Skin

**Biomimetic Peptides**  
Functional Food  
for Skin

**IntoCell-Growth Factors**  
Growth Factors that are  
super permeable to skin

**AHA, BHA, LHA**  
Gentle exfoliation

**IntoCell-  
Growth Factors**

IntoCell PLUS EGF, IntoCell IGF 1, IntoCell aFGF, IntoCell-bFGF,  
IntoCell VEGFA, IntoCell PDGFA

Anti-aging, Anti-wrinkle, Wound healing

**Growth Factors**

PGF, SCF, AQP-1, NGF, KGF-1, TGF-b1, hBD3H, SOD-1, Rantes

Anti-aging, Anti-wrinkle, Wound healing, Anti-oxidant, Anti-microbial, Anti-acne,  
Anti-atopic dermatitis

**Biomimetic  
Peptides**

[Phyto-NEP]	[Copper Tripeptide-1]	[Aurein]	[Glutathione]
Anti-aging, Anti-wrinkle	Anti-atopic dermatitis	Anti microbial, Anti-aging, Anti-wrinkle	Improves skin discolorization

**AHA, BHA,  
LHA**

[Lactic acid] AHA	[Salicylic acid] BHA	[Capryloyl Salicylic acids] LHA
----------------------	-------------------------	------------------------------------

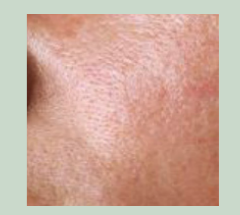
Gentle exfoliation



Thick skin



Troubled skin



Combination & oily skin



## Product Information



**[Contents]** 4ml X 5 vials, 1 X reusable spoid

**[Directions]** Remove aluminum cap and rubber cap. Place spoid over the open vial and apply evenly onto the skin. Use topically.

**[Caution]** For external use only. Not to be swallowed. In case of accidental ingestion, seek medical assistance immediately. Avoid contact with eyes. If contacted with eyes, rinse thoroughly with water and consult with doctor. Keep out of reach of children.

**[All ingredients]** Water, 1,2-Hexanediol, Glucose, Defined Cell Culture Media 7, Sodium Chloride, Sodium Hyaluronate, Oligopeptide-76, Caffeoyl sh-Decapeptide-9, Copper Tripeptide-1, r-(sh-Oligopeptide-75 sh-Oligopeptide-1), sr-Rainbow Trout Oligopeptide-1 sh-Oligopeptide-2, sr-Rainbow Trout Oligopeptide-1 sh-Polypeptide-11, sh-Polypeptide-60, sr-Rainbow Trout Oligopeptide-1 sh-Polypeptide-1, sr-Rainbow Trout Oligopeptide-1 sh-Polypeptide-8, sr-Rainbow Trout Oligopeptide-1 sh-Polypeptide-9, sh-Oligopeptide-14, sh-Polypeptide-22, sh-Polypeptide-64, sh-Oligopeptide-33, sh-Polypeptide-14, sh-Polypeptide-16, sh-Polypeptide-3, sh-Polypeptide-4, Glutathione, Salicylic Acid, Capryloyl Salicylic Acid, Lactic Acid



# GLUTANEX



[www.nexus-pharma.com](http://www.nexus-pharma.com)

CH BUILDING, 71, GONGHANGDAERO 45GIL  
GANGSEOGU, SEOUL, KOREA  
(T) +82 2 6406 2405  
[info@nexus-pharma.com](mailto:info@nexus-pharma.com)

True Beauty - Built by Health.